



U.S. Customs and
Border Protection

Automated Commercial Environment (ACE)

ACE Entry Summary Filing & Related ACE Portal Functionality

Bert Darden
ACE Ambassador/Supervisory Import Specialist
U.S. Customs and Border Protection



Don't Wait - Migrate

- Core trade processing capabilities in ACE will be completed within approximately three years

- **Mandatory dates for use of ACE:**

May 1, 2015: Mandated use of Manifest – All electronic export and import manifest data must be transmitted via ACE

November 1, 2015: Mandated use of Cargo Release – All data associated with the release of cargo, including PGA interactions, must be transmitted via ACE

October 1, 2016: Mandated use of ACE

- **Stakeholder preparation for upcoming deployments**

Training assessment will be based on features scheduled for deployment

- *Webinar, User Guide, Web-Based Training, etc.*

Trade users - Certification environment planned to be available 6 weeks prior to deployments

Information will continue to be disseminated:

- *CBP.gov, CSMS, Monthly, TLC and ITDS Board of Directors meetings*

CBP Field Operations



U.S. Customs and
Border Protection



ACE Entry Summary Filing Benefits

- ▶ Brokers and self-filing Importers can file the following entry summary types in ACE:
 - Consumption, Antidumping/Countervailing Duty (AD/CVD) and Informal
 - Entry types 01, 03, and 11 = nearly 99% of all entry summaries

- ▶ ACE entry summary participation allows filers to:
 - Eliminate paper entry summaries
 - Receive faster CBP responses
 - Decrease courier and administrative costs.

- ▶ New features require ACE Entry Summary filing:
 - ACE Cargo Release (also known as Simplified Entry)
 - Electronic Corrections and Cancellations
 - Partner Government Agency (PGA) Message Set
 - Document Image System

CBP Field Operations



U.S. Customs and
Border Protection



ACE Entry Summary Filing Benefits (Cont.)

- ▶ ACE Entry Summary filers can benefit from additional functionalities, which include:
 - File type 03 entry summaries using Remote Location Filing (RLF)
 - Conduct expanded analysis using data objects only available to ACE entry summary filers through the ACE Portal Reporting tool
 - Use enhanced ACE report capabilities to share reports and monitor CBP Forms 28, 29, and 4647
 - Gain access to an expanded AD/CVD query
 - Perform census overrides electronically in ACE and reduce instances of electronic invoice transmission
 - Obtain more information from the ACE Entry Summary query than from the ACS Entry Summary query
 - Transmit Post Summary Corrections (PSC) electronically and avoid the paper Post Entry Amendment (PEA) process

CBP Field Operations



U.S. Customs and
Border Protection



How To Get Started Checklist

- ▶ ACE Entry Summary filing is easy. You're just two phone calls away!

- ▶ **What to do first:**
 - ☑ Contact your ABI software provider to obtain information about ACE Entry Summary filing. To access the ABI Software Vendor list, please visit the following URL at:
http://www.cbp.gov/xp/cgov/trade/automated/automated_systems/abi/getting_started/

 - ☑ Contact your assigned CBP Client Representative to notify your intent to begin ACE Entry Summary filing.
http://www.cbp.gov/xp/cgov/trade/automated/automated_systems/client_reps.xml

- ▶ **Once you're ready:**
 - ☑ Begin filing as many of your Entry Summaries in ACE as you choose.

 - ☑ Benefit from all capabilities available with ACE Entry Summary filing.

CBP Field Operations



U.S. Customs and
Border Protection



ACE Entry Summary Filing and ACE Portal Related Functionality

▶ Upload Forms Capability

– UC2 - Documents Required request message received via ABI for:

- Entry Summary package
- Specific documentation
- Electronic Invoice

The top screenshot displays the 'Task List' section of the ACE secure data portal. It features a table with the following columns: Action #, Form Type, Entry Summary #, Date, and CBP Status. The table contains several rows of data, with the last row having a 'Sent' status highlighted by a red circle. Below the table are sections for 'Phone Directory', 'Reminder', and 'AIT News'.

The bottom screenshot shows the 'Attach Files' section. It includes instructions for attaching files, such as 'Click Browse to select the file, or type the path to the file in the box below.' and 'Click Attach File to add the file to the Attachment List box.' There are also fields for 'Add File' and 'Attachment' with associated buttons like 'Browse', 'Attach File', 'View Attachments', and 'Remove'.

CBP Field Operations



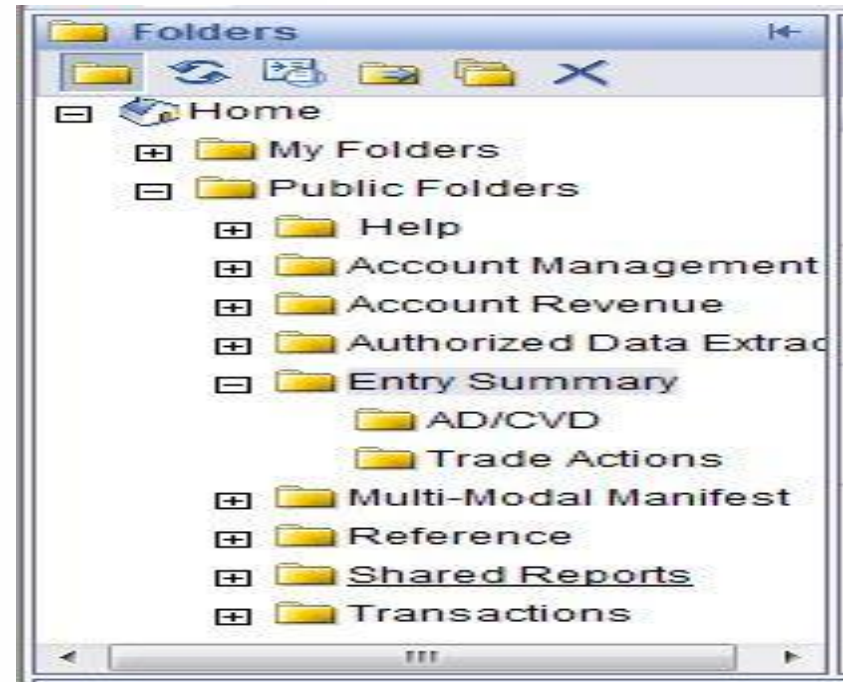
U.S. Customs and Border Protection



ACE Entry Summary Folder Reports Available

- ▶ Entry Summary Reports Folder
 - ESM 7001 Entry Summary Census Warning and Override Report
 - ESM 7008 Entry Summary Line Detail Report
 - ESM 7068 Entry Summary Report

- ▶ Trade Actions Sub-Folder
 - ESM 7024 ACE Reject Report
 - ESM 7025 CBP Form 28, 29, 4647 Status Report



Entry Summary Folder Report Data is refreshed nightly

CBP Field Operations



U.S. Customs and
Border Protection



References and Resources



CBP Field Operations



U.S. Customs and
Border Protection



ACE Entry Summary Information

▶ The following ACE Entry Summary information is available at CBP.gov:

– Getting Started Filing ABI Data in ACE

http://www.cbp.gov/xp/cgov/trade/automated/modernization/ace_edi_messages/catair_main/abi_catair/getting_started/

- Table of Contents
- Introduction and Getting Started
- ACS to ACE Transition Topics

– ACE Entry Summary Process and Policy

http://www.cbp.gov/xp/cgov/trade/trade_programs/entry_summary/ace/

- ACE Summary Instructions
- ACE Entry Summary Filings
- ACE Entry Summary Business Process

CBP Field Operations



U.S. Customs and
Border Protection



Cargo Systems Messaging Service (CSMS)

- ▶ Provides information on all commercial systems, including truck e-Manifest, air manifest, rail manifest, ocean manifest, and Automated Broker Interface (ABI):
 - CSMS is the broadcast message system for users of CBP automated commercial trade systems
 - Messages from CSMS are sent instantly, providing near real-time access to the latest news and information

- ▶ Two ways to get information with CSMS:
 - Messages e-mailed directly to subscribers
 - Messages also stored on a searchable database, accessible via CBP.gov

- ▶ Subscribe for CSMS messages at:
<https://public.govdelivery.com/accounts/USDHSCBP/subscriber/new?pop=t&qsp=938>

CBP Field Operations



U.S. Customs and
Border Protection



ACE Support

- ▶ Assigned Client Representative or the Client Representative Outreach Line
 - 1 (571) 468 - 5500

- ▶ CBP.gov
 - ACE: Modernization Information Systems
 - Accelerating ACE at a Faster Pace
 - http://www.cbp.gov/linkhandler/cgov/trade/automated/modernization/ace_resume.ctt/ace_resume.pdf
 - ACE Entry Summary Filing
 - http://www.cbp.gov/linkhandler/cgov/trade/automated/modernization/whats_new/ace_entry_filing.ctt/ace_entry_filing.pdf

CBP Field Operations



U.S. Customs and
Border Protection



Portal Applications



The application to request your free ACE Portal account as well as instructions and tutorials can be found on CBP.gov

http://www.cbp.gov/xp/cgov/trade/automated/modernization/ace_app_info/

Web Based Training for each release



http://nemo.cbp.gov/ace_online

Cargo Systems Messaging Service

A subscription based, broadcast message system for users of CBP automated commercial trade system <http://apps.cbp.gov/csms/>



www.CBP.gov/Modernization

- ACE Fact Sheets
- Training and Reference Guides
- Federal Register Notices
- Presentations of Capabilities

CBP Field Operations



U.S. Customs and
Border Protection





U.S. Customs and Border Protection